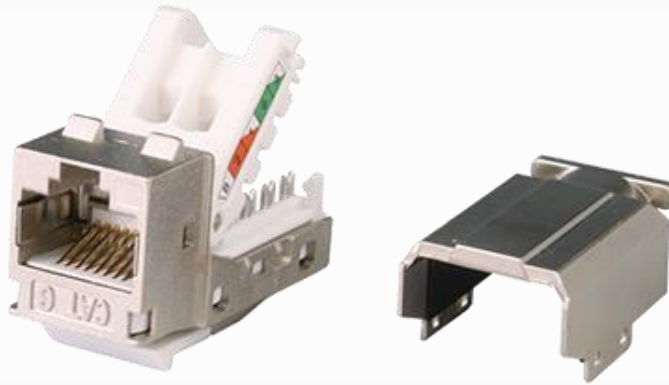


## Category 6 Shielded Keystone Jack



Category 6 shielded keystone jack is designed for superior performance and easy assembly, meets and exceeds ANSI/TIA-568.2-D and ISO/IEC 11801 2nd edition Category 6 standards, supporting Gigabit Ethernet application and beyond. Narrow width design fits 24 ports in one unit panel for most efficient use of 1U panel.

### Features

- Zinc-alloy metal shell
- Contacts are phosphor bronze plated with 50 micro inches hard gold
- Dual T568A & T568B wiring
- Polycarbonate 94V0 rated
- Intertek ETL / Force EC Cat.6<sub>A</sub> VERIFIED
- 4PPoE compliant in accordance with IEEE802.bt Type 4

### Ordering Information

Part No.	Description
IKC1A68TPZ00	RJ45, 8-Conductor Cat.6, Tool-free, Shielded, 180 degree, H.D. version
IKC2A68KPS00	RJ45, 8-Conductor Cat.6, KRONE/110 IDC, Shielded, 180 degree, H.D. version
IKC5A68TPZ00	RJ45, 8-Conductor Cat.6, Tool-free, Shielded, 180 degree, H.D. version

## Category 6 Shielded Keystone Jack



IKC6A68TPZ00	RJ45, 8-Conductor Cat.6, Tool-free, Shielded, 180 degree, H.D. version
IKC7A68TPZ00	RJ45, 8-Conductor Cat.6, Tool-free, Shielded, 180 degree, H.D. version
IKC1B68TPZ00	RJ45, 8-Conductor Cat.6, Tool-free, Shielded, 180 degree, H.D. version, fits 0.5U panel
IKC7B68TPZ00	RJ45, 8-Conductor Cat.6, Tool-free, Shielded, 180 degree, H.D. version, fits 0.5U panel
IKC1K68KPS00	RJ45, 8-Conductor Cat.6, KRONE/110 IDC, Shielded, 90 degree, H.D. version
IKC2K68TPZ00	RJ45, 8-Conductor Cat.6, KRONE/110 IDC, Shielded, 90 degree, Short depth design, L=29.86mm
IKC0T68TPZ00	RJ45, 8-Conductor Cat.6, Tool-free, Shielded, 90 degree, H.D. version
IKC1T68TPZ0	RJ45, 8-Conductor Cat.6, Tool-free, Shielded, 90 degree, H.D. version, L=34.5mm